

[www.ggrgroup.com](http://www.ggrgroup.com)

# STAGE V TELEHANDLER 14.42



**GB FARESIN**

# STAGE V TELEHANDLER 14.42

(4.2t x 10.2m)



The 14.42 features a lifting capacity of up to 4200kg and a maximum lifting height of 13.6m thanks to its hydraulic, three section boom.

Fitted with a Deutz Stage V environmentally friendly engine, the 14.42 includes an exhaust gas after-treatment system, with DOC + DPF, to significantly reduce particulate matter and lower fuel consumption. The 14.42 has an average hourly fuel consumption of just 3.5l/h, without the use of AdBlue, creating a cleaner and greener environment during operation.

The 14.42 features front outriggers, for greater control when handling materials on rough and uneven terrain and benefits from side levelling technology, for enhanced safety to help prevent the telehandler from operating outside its working envelope.

This eco-friendly telehandler is also equipped with a full colour LCD dashboard, providing a clearer view to enable the operator to identify operating needs in real time, whilst providing a full diagnostics report.

## BENEFITS OF THE GGR FARESIN TELEHANDLERS



### REDUCED CONSUMPTION

Faresin telehandlers are powered by fast, ecological and efficient Stage V diesel engines, unrivalled power with a low hourly fuel consumption.



### EVERYTHING UNDER CONTROL

Featuring dashboards with a machine status intuitive display. The immediate viewing of all parameters allows the operator to identify operating needs in real time.



### ROBUST STEEL FRAME

The S355 robust steel frame has been fully welded by the latest manufacturing robots, ensuring the highest quality available.



### HYDROSTATIC TRANSMISSION

Featuring a single speed hydrostatic transmission, allowing a speed from 0-25 km/h, for easy manoeuvring with materials in the work area.



### REDUCED CYCLE TIMES

The new hydraulic systems with Load Sensing technology, in conjunction with the EcoFast valves, offer high performance levels and fuel savings.



### ERGONOMICS AND VISIBILITY

The Queen Cab is equipped with an ergonomic seat, optional air conditioning, comfortable joystick, steering wheel and anti-glare glass to maximize operational efficiency and provide 360° vision.



### EASY MAINTENANCE

The readily available and easy accessibility of components combine to make the Faresin telehandlers synonymous with efficiency and savings.



### 3 STEERING CONFIGURATIONS

With a choice of front wheel steering, four wheel steering and crab steering, the 14.42 allows the operator the ability to fit into some of the most difficult of work areas.



## STAGE V ENGINES: POWER AND RELIABILITY

The 14.42 telehandlers are equipped with new Deutz (55.4kW) engines compliant with Stage V regulations, these modern engines are capable of ensuring excellent power and reduced fuel consumption, which helps in maximising efficiency and durability.



### CLEAN & EFFICIENT

The angle of inclination of the blades is variable according to the operating temperature in order to keep low power absorption and fuel consumption.



### AIR FILTER

The air filter is equipped with a dust ejector system and a cyclone pre-filter, which significantly reduce maintenance work, guaranteeing maximum efficiency.



### ENGINE HOOD

The 14.42 engine hood has been specifically designed to facilitate the best possible air flow, helping to ensure the lifespan of the components.

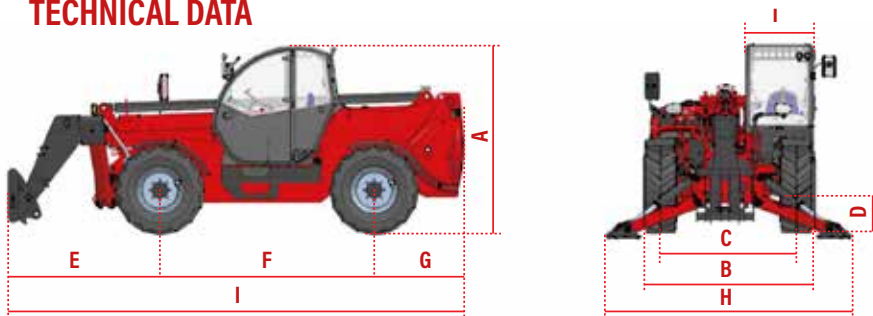


### RADIATING SURFACE

Large radiating surface designed to guarantee maximum engine efficiency with even the heaviest of use and at the highest temperatures.



## TECHNICAL DATA



### MOTOR

Engine	Deutz 55.4kW / 75.3hp Stage V
Transmission	Hydrostatic single gear
Aftertreatment system	DOC + DPF
Diesel tank capacity	120 litres

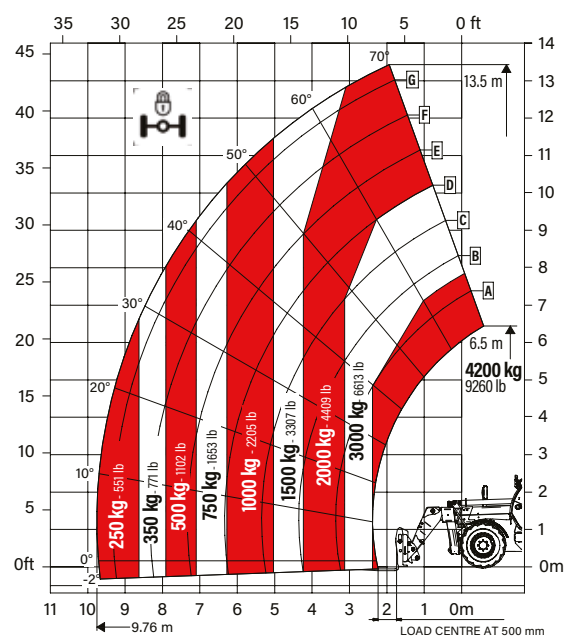
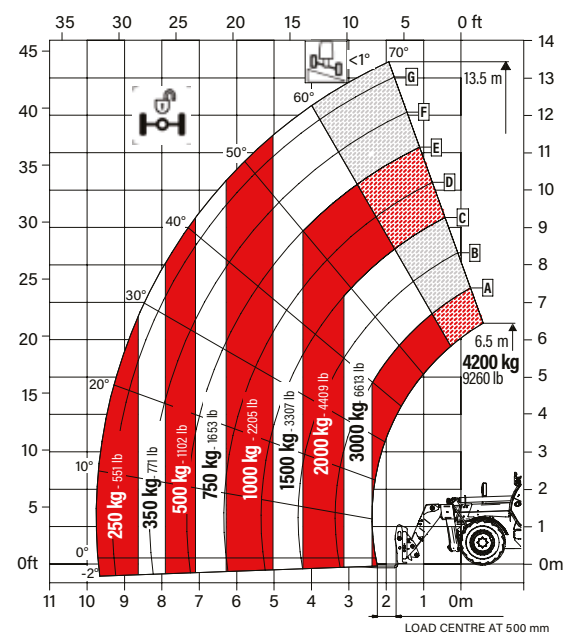
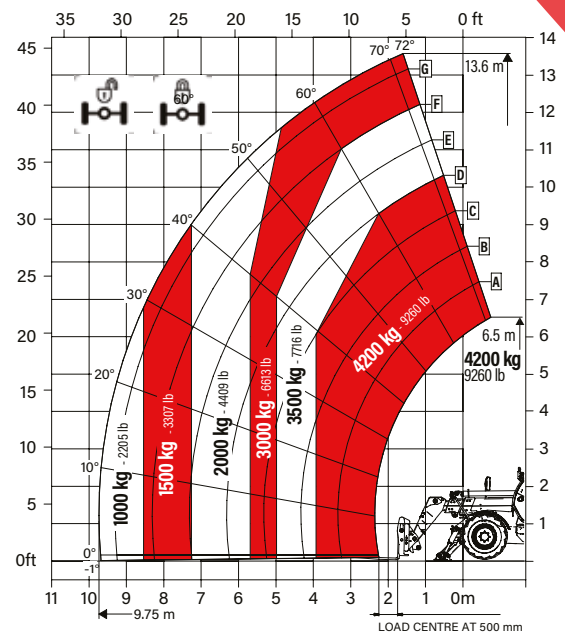
### VEHICLE DATA

Unladen weight	11000kg
Maximum capacity	4200kg
Maximum lifting height	13.6m
Maximum working radius	9.75m
Speed	0-25km/h
Traction drive	all-wheels via universal joint shaft
Steering	four-wheels, 3 modes
Flow rate hydraulic services	120 l/min @ 230 bar
Steering radius	4.2m
Wheels	405/70 - 20

### DIMENSIONS (mm)

(A) Height	2500
(B) Width	2331
(C) Gauge	1862
(D) Ground clearance	280
(E) Front overhang	2180
(F) Pitch	2950
(G) Rear overhang	1240
(H) Width with stabilizers	3418
(I) Length	6370
(L) Cabin width	960

## RATED LOADS





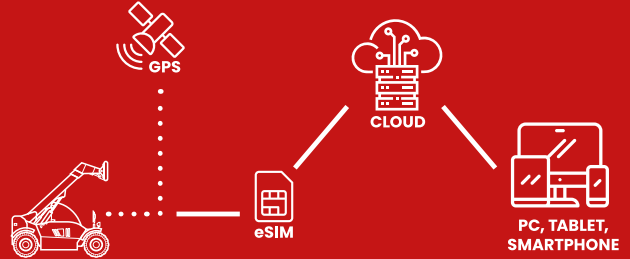
## INTRODUCING FARMATICS INDUSTRY 4.0 APPLIED TECHNOLOGY

In the Research and Development applied to Industry 4.0, improving efficiency and safety standards is a fundamental step.

Faresin has introduced Farmatics, the complete solution of Hardware, eSIM, Software Application and Server Data Management, which allows you to remotely monitor the operation of telescopic handlers fitted with electronically controlled engines.

Thanks to a GPS system, the customer can:

- Geolocate the position
- Geofence the machine for added security and scheduled service alerts
- View the condition of the machine
- Control the consumption and productivity of their vehicles



## THE GGR FARESIN RANGE OF TELEHANDLERS GGR & FARESIN - INDUSTRY LEADERS WORKING TOGETHER

GGR Group are a leader in their industry offering sales and hire of specialist lifting equipment throughout the UK, supported with an expert technical team, a service department and accredited training centres nationwide. Faresin Industries, based in Breganze (Vicenza), designs, manufactures and sells worldwide feed mixer wagons and ration analysis instruments for the livestock sector and telescopic handlers for agricultural and industrial use.

Following the overwhelming success of the launch of the world's first electric telehandler to the UK market, the 6.26E. GGR and Faresin are now working together to bring the latest in Stage V and Electric technology to the UK and European continent. By working together, GGR and Faresin can provide unrivalled quality, technical prowess and solid, reputable customer service across the entire European region, with new units available on a monthly basis.



### 6.26E (2.6T X 4.1M)

With a lifting capacity of 2.6t, this innovative, eco-friendly telehandler is powered by a lithium battery with up to 8hrs of run time. It lends itself to a range of benefits including reduced charging times and notable savings in maintenance and running costs.



### 6.26 (2.6T X 4.1M)

Innovative and environmentally friendly, the 6.26 features a Stage V/Tier 4 engine ensuring excellent performance and low fuel consumption during operation. This mini telehandler also includes an exhaust gas post-treatment system with DOC+DPF, reducing emissions and carbon.



### 14.42 (4.2T X 10.2M)

The 14.42 features a lifting capacity of up to 4200kg at 10.2m and a maximum lifting height of 13.6m thanks to its hydraulic, three section boom. Fitted with a Deutz Stage V environmentally friendly engine, the 14.42 also includes an exhaust gas DOC+DPF after-treatment system.



### 17.40 (4.0T X 9.6M)

The powerful 17.40 has been designed for use on construction sites and features a lifting capacity of 4000kg up to a height of 9.6m and a maximum working height of 16.4m. Versatile and extremely adaptable, the 17.40 benefits from a Deutz Stage V engine to help reduce emissions.



“NOVATIONEM NON IMITARI”

**HEAD OFFICE:** GGR UNIC House, Pegasus Way, Haddenham Business Park, Haddenham, Buckinghamshire, HP17 8LJ  
Telephone: +44 (0)1844 202071 Fax: +44 (0)1844 202075

**UK NORTHERN DEPOT:** Presentation House, Broadgate, Broadway Business Park, Oldham, OL9 0JA  
Telephone: +44 (0)161 683 2580 Fax: +44 (0)161 683 4444

**UK SCOTTISH DEPOT:** Block 19, South Avenue, Blantyre Industrial Estate, Blantyre, Glasgow, G72 0XB  
Telephone: +44 (0)1698 824 444 Fax: +44 (0)1698 824 488



[www.ggrgroup.com](http://www.ggrgroup.com)