

## Glass Stillages **[1000kg & 1500kg]**

Easily store glass, stone slabs, plasterboard, GRC panels, sheet metal and more with our dependable Glass Stillages.

These Glass Stillages from GGR gives users a maximum capacity of 1000kg (loaded evenly) with its 18mm plywood shelf base, perfect for keeping materials safe on-site ready for installing in their final location.

Heavy-duty 40mm box steel and a generous 390mm on each side combined with the 2000mm length and 1900mm height gives operators ample storage space. Perfect for use on busy construction sites, warehouses, yards, material manufacturing facilities and much more.

### Liftable Glass Stillages

Make this Glass Stillage even more adaptable with the addition of lifting eyes while also raising the capacity to 1500kg (loaded evenly).

For raising or lowering the Glass Stillages from different levels, the addition of heavy-duty 15mm thick lifting eyes enables operators the ability to use mobile cranes, tower cranes, gantry cranes or spider cranes to manoeuvre and position their stillages around site.

### Key Features

- 1000kg (AGT88) & 1500kg (AGT87) capacity (loaded evenly)
- 40mm box steel frame
- 490mm (AGT88) or 390mm (AGT87) shelf width
- AGT88 weight: 165kg (no lifting eyes)
- AGT87 weight: 170kg (with lifting eyes)
- For sale only

### Reference Codes

With Lifting Eyes (1500kg): **AGT87**

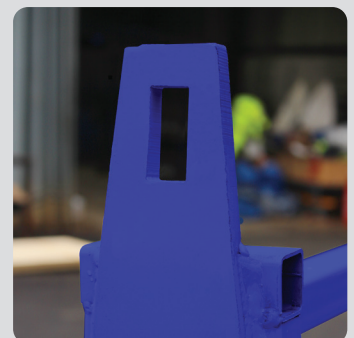
Without Lifting Eyes (1000kg): **AGT88**



Glass Stillage without lifting eyes



Heavy-duty forklift eyes make transporting the Glass Stillages easy and safe, with them you can raise and lower the stillage to different floors.



Optional lifting eyes improve the versatility of the Glass Stillages to allow tower cranes, mobile cranes and spider cranes to be used in moving the stillage.



Glass Stillage with lifting eyes



Glass Stillage without lifting eyes



Glass Stillage with lifting eyes