

Popular Slimline Crane

GF30 Pick & Carry Crane [3.0t x 0.5m]

With its small working footprint, the GF30 pick and carry crane is the ultimate machine for lifting and shifting heavy loads in confined areas.

This compact pick and carry crane is pedestrian operated and boasts a lifting capacity of up to 3 tonnes.

The GF30 pick and carry crane comes with a radio remote control and 180° rear hydraulic steering for optimum control when handling heavy loads on site.

Battery powered, it is the ideal machine for lifting in sensitive or congested environments including workshops, factories, power plants and busy construction sites.

Key Features

- Capacity - 3.0t x 0.5m
- 180° rear hydraulic turning
- No outriggers
- Optional forklift attachment
- Radio remote control as standard

Reference Code

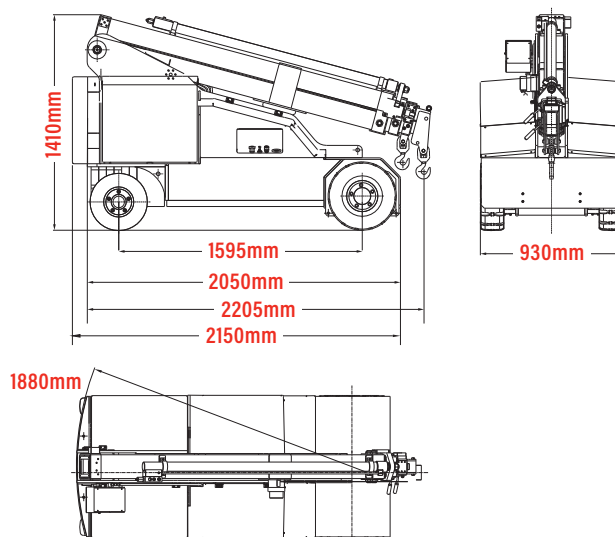
MCGF30



Technical Specifications

Capacity	3.0t x 0.5m
Maximum working radius	4.8m (5.5m with searcher hook)
Maximum lifting height	6.8m (7.3m with searcher hook)
Dimensions	2300mm (l) x 930mm (w) x 1410mm (h)
Weight	3500kg
Boom length	2.23 - 6.53m
Boom type	3 section box boom (1+2 hydraulic, 3 manual)
Derricking angle	-15° to 64°
Steering	rear 180°
Tyres	2 solid rear, 2 solid front
Power source	24v rechargeable battery
Battery charger	110v
Travel speed	3km/h
Gradability	±20° (without load)
Standard equipment	Radio remote control, digital safe load indicator with display, radio-controlled proportional distributor, reversing alarm, emergency stop button, work light
Optional equipment	Searcher hook, jib, operator platform, buckets, full-winch system, low marking tyres, radio remote control, auto-levelling hydraulic system with front tool holder plate, forks, fork sideshifters

Technical Data (approx. mm)



Standard radio remote



Optional forks
(Capacity: 1500kg)



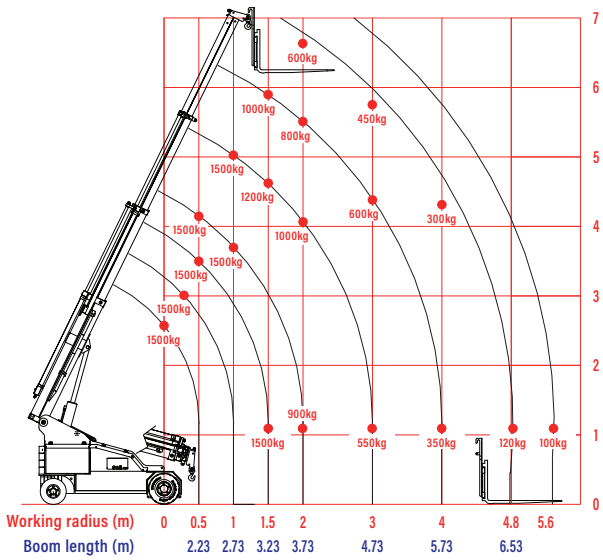
Optional searcher hook
(Capacity: 800kg)



Optional winch

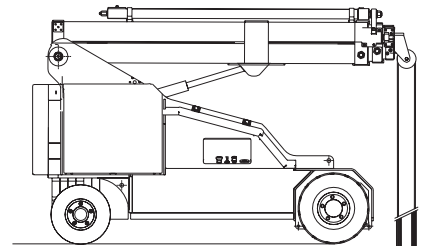


Forklift Rated Loads

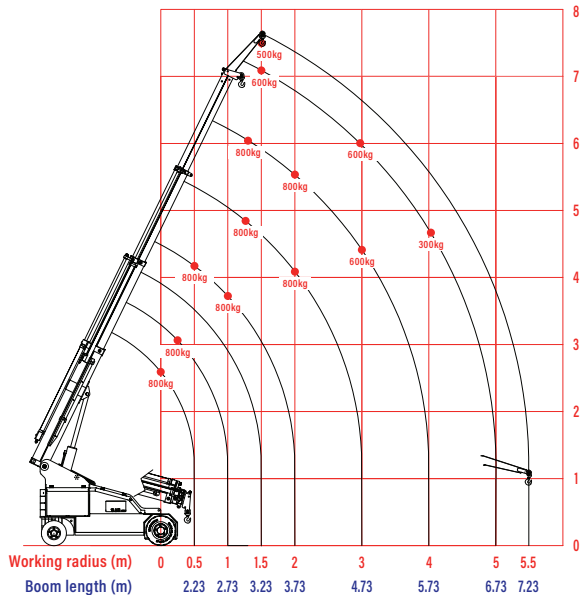


Optional Winch Hook Falls

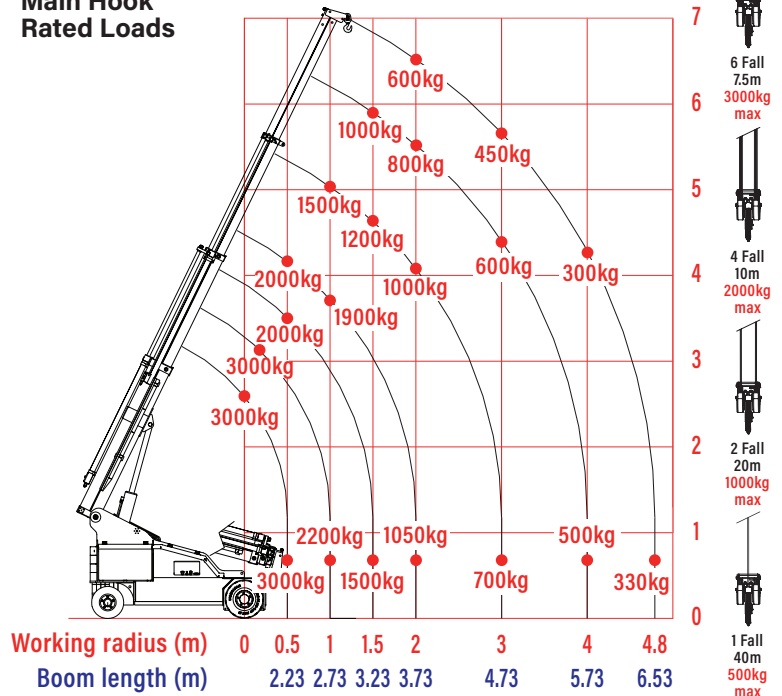
Max Hook Falls: 6
Max Capacity Per Line: 500kg



Searcher Hook Rated Loads



Main Hook Rated Loads



6 Fall 7.5m 3000kg max
4 Fall 10m 2000kg max
2 Fall 20m 1000kg max
1 Fall 40m 500kg max