

# Stone Lifters

# GGR'S MRTA611 GRC P

## MRTA611 GRC Lifter [405kg]

The MRTA611 GRC Lifter has been designed by GGR's engineering team in response to the ever growing usage of Glass Reinforced Concrete (GRC) panels in modern architecture.

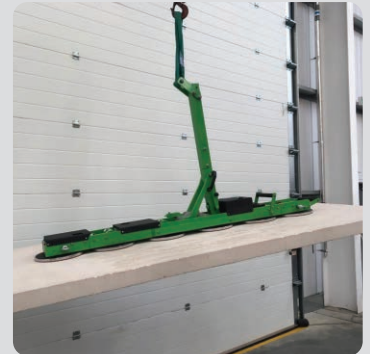
Built on the popular MRTA611 glass vacuum lifter frame the machine has been converted to have a constant running vacuum pump with its dual circuit vacuum system and textured stone vacuum pads to enable this lifter to lift materials such as stone slabs, GRC panels, patterned, blasted and shattered toughened laminate panels.

With a capacity of 405kg in a six pad configuration, this lifter has been designed for the longer GRC panels that need more pad spread over our 600kg capacity GRC Lifter (VSL26).

Built on the MRTA611 frame means this GRC lifter also comes with manual 90° left & right lockable rotation and 90° manual tilting from vertical to horizontal.

### Key Features

- Capacity: 405kg
- 290mm diameter abrasion resistant suction pads with replaceable sealing ring
- Constant running dual circuit vacuum system with reserve tank, non-return valve and vacuum gauge for each circuit
- 90° manual tilting from vertical to horizontal
- Manual 90° left & right lockable rotation
- Weight: 67kg



**Reference Code**  
**VSL15**

### Technical Specifications

<b>Safe working load</b> (smooth, clean surface at 60% vacuum)	capacity:	405kg
<b>Number of suction cups</b>	cups:	6
<b>Suction cup</b>	description:	black rubber, abrasion resistant, replaceable sealing ring
<b>Suction cup diameter</b>	diameter:	290mm
<b>Suitable for lifting</b>	material properties: surface: example:	porous and polished rough and smooth GRC panels, patterned, blasted and shattered toughened laminate, flamed, honed or polished stone slabs
<b>Weight of lifter</b>	approx:	67kg
<b>Depth of lifter</b>	depth:	210mm
<b>Rotation</b>	rotation:	90° manual left & right lockable
<b>Tilt</b>	tilt:	90° manual
<b>Vacuum system</b>	dual circuit:	1 constant running pump, 2 vacuum reserve tanks
<b>Voltage</b>	pump: battery charger:	12v DC from rechargeable battery (comes with extra battery as standard) 110v/240v 50/60Hz single phase factory selectable
<b>Optional accessories</b>	optional:	radio remote control

4 x secondary safety attachment points come as standard for use with GGR's Stone SSD



The suction cups on the MRTA611 GRC are the reliable Wood's Powr-Grip 290mm diameter textured pads with replaceable seal.



The MRTA611 GRC lifter suction is provided by the powerful dual circuit constant running pump, able to provide suction on various materials.



**Technical Data (mm)**

